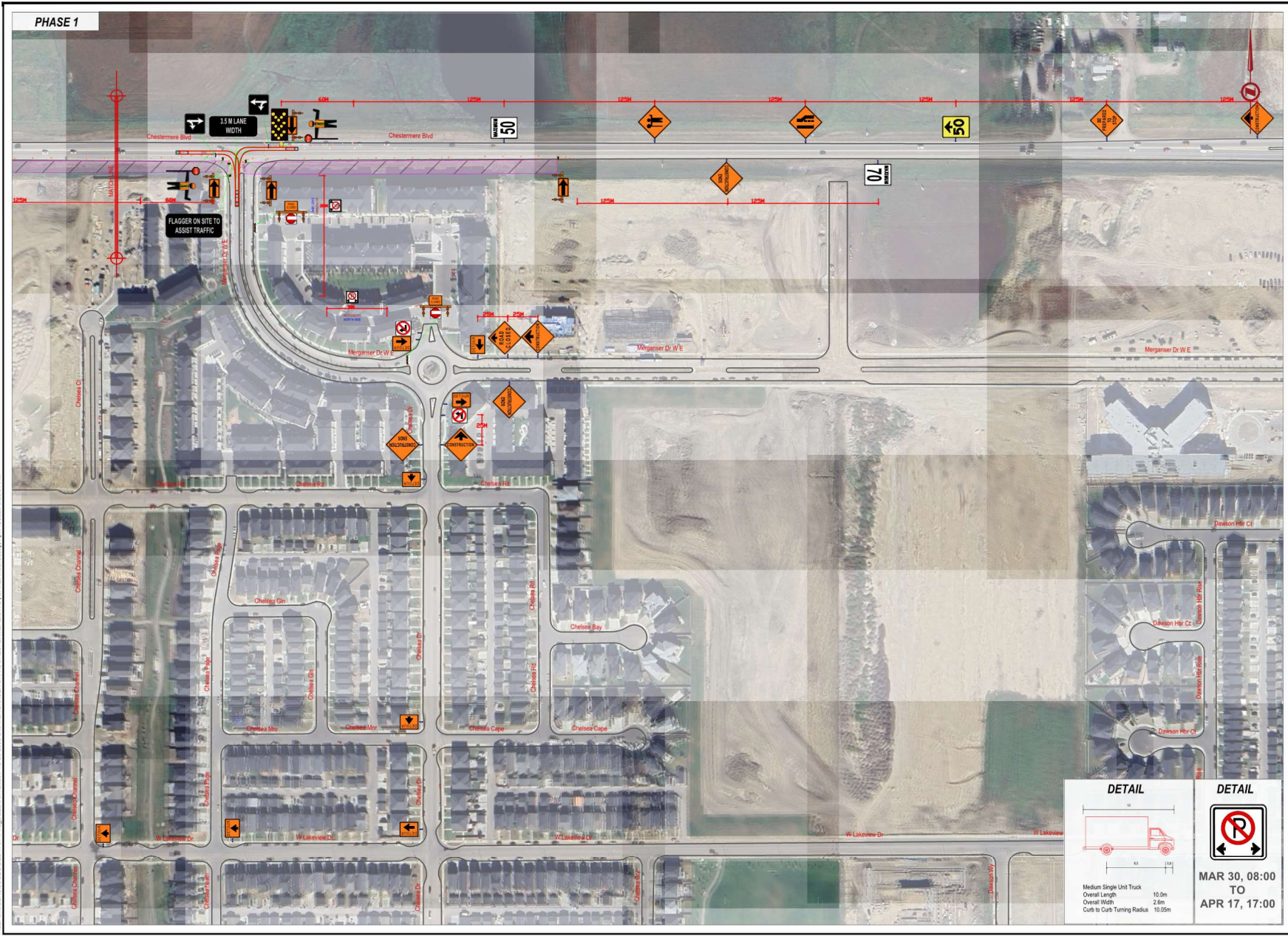


FILE: C:\USER\JOSE\DESKTOP\FTS_3\LEDCOR\208\FTS-26-2686-240_MERGANSER DR W, CHESTERMERE.DWG | DATE: Wednesday, April 1, 2026 3:53:01 PM



FTS-26-2686

SITE CONTACT(S)

KAYLA DEWANE
(431) 373-3817

SETUP INFORMATION

SETUP: MONDAY 08:00 MAR 30
PICKUP: FRIDAY 17:00 APR 17
DAILY SET-UP.

NOTES

1. COMPANY: LEDCOR.
2. PURPOSE: HYDROVACUING, DRILLING, AND BACKFILL WORKS.
3. ONE PHASE AT A TIME.

MAX SPEED(KM/H): 50 KM/H

SPACING BETWEEN DELINEATORS(meters) 8 meters

SEAL



Fast Traffic Solutions Inc.
RM APEGA ID#: 68828
PERMIT #: P16365
The Association of Professional Engineers and Geoscientists of Alberta (APEGA)

PREPARED BY:
JOSE GALINDEZ (587) 707 1557

FastTraffic Solutions

0 60 120 m

1:3000

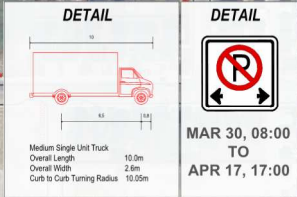
CLOSURE DESCRIPTION

EB SHOULDER WORK

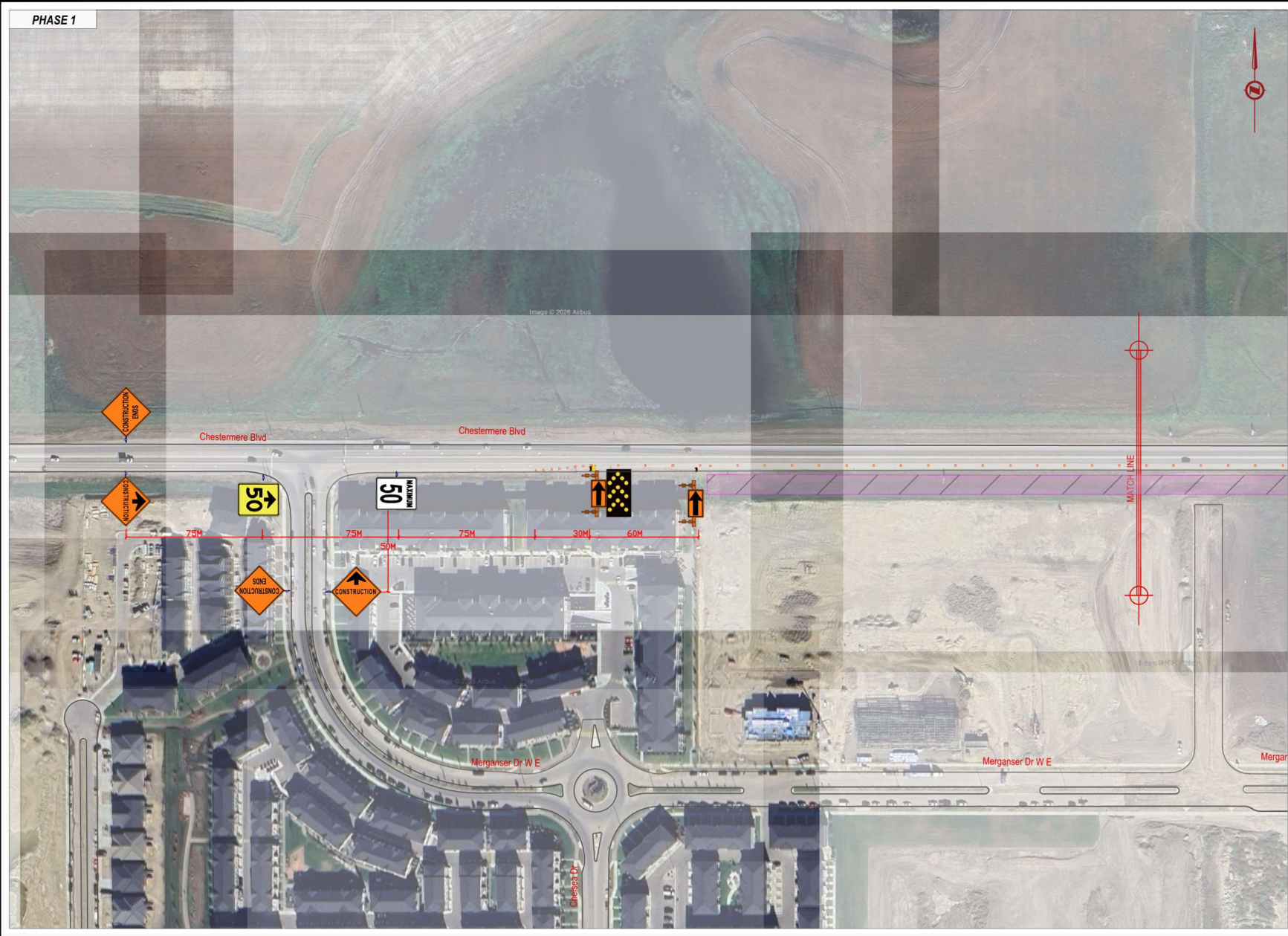
LOCATION

240 MERGANSER DR W,
CHESTERMERE.

SHEET 2 OF 7



PHASE 1



FTS-26-2686

SITE CONTACT(S)

KAYLA DEWANE
(431) 373-3817

SETUP INFORMATION

SETUP: MONDAY 08:00 MAR 30
PICKUP: FRIDAY 17:00 APR 17
DAILY SET-UP.

NOTES

1. COMPANY: LEDCOR.
2. PURPOSE: HYDROVACUING, DRILLING, AND BACKFILL WORKS.
3. ONE PHASE AT A TIME.

MAX SPEED(KM/H): 50 KM/H

SPACING BETWEEN DELINEATORS(meters) 8 meters

SEAL



Fast Traffic Solutions Inc.
 RM APEGA ID#: 68828
 PERMIT #: P16365
 The Association of Professional Engineers
 and Geoscientists of Alberta (APEGA)

PREPARED BY:

JOSE GALINDEZ (587) 707 1557



CLOSURE DESCRIPTION

EB SHOULDER WORK

LOCATION

240 MERGANSER DR W,
CHESTERMERE.

SHEET 3 OF 7

SHEET SIZE: ANSI B 20 mm

FILE: C:\USER\JOSE\DESKTOP\FTS_31\LEDCOR\2026\FTS_26-2686-240_MERGANSER DR W, CHESTERMERE.DWG | DATE: Wednesday, April 1, 2026 3:53:11 PM

PHASE 1



FTS-26-2686

SITE CONTACT(S)

KAYLA DEWANE
(431) 373-3817

SETUP INFORMATION

SETUP: MONDAY 08:00 MAR 30
PICKUP: FRIDAY 17:00 APR 17
DAILY SET-UP.

NOTES

1. COMPANY: LEDCOR.
2. PURPOSE: HYDROVACCING, DRILLING, AND BACKFILL WORKS.
3. ONE PHASE AT A TIME.

MAX SPEED(KM/H): 50 KM/H

SPACING BETWEEN DELINEATORS(meters) 8 meters

SEAL



Fast Traffic Solutions Inc.
RM APEGA ID#: 68828
PERMIT #: P16365
The Association of Professional Engineers
and Geoscientists of Alberta (APEGA)

PREPARED BY:
JOSE GALINDEZ (587) 707 1557

FastTraffic Solutions



CLOSURE DESCRIPTION

EB SHOULDER WORK

LOCATION

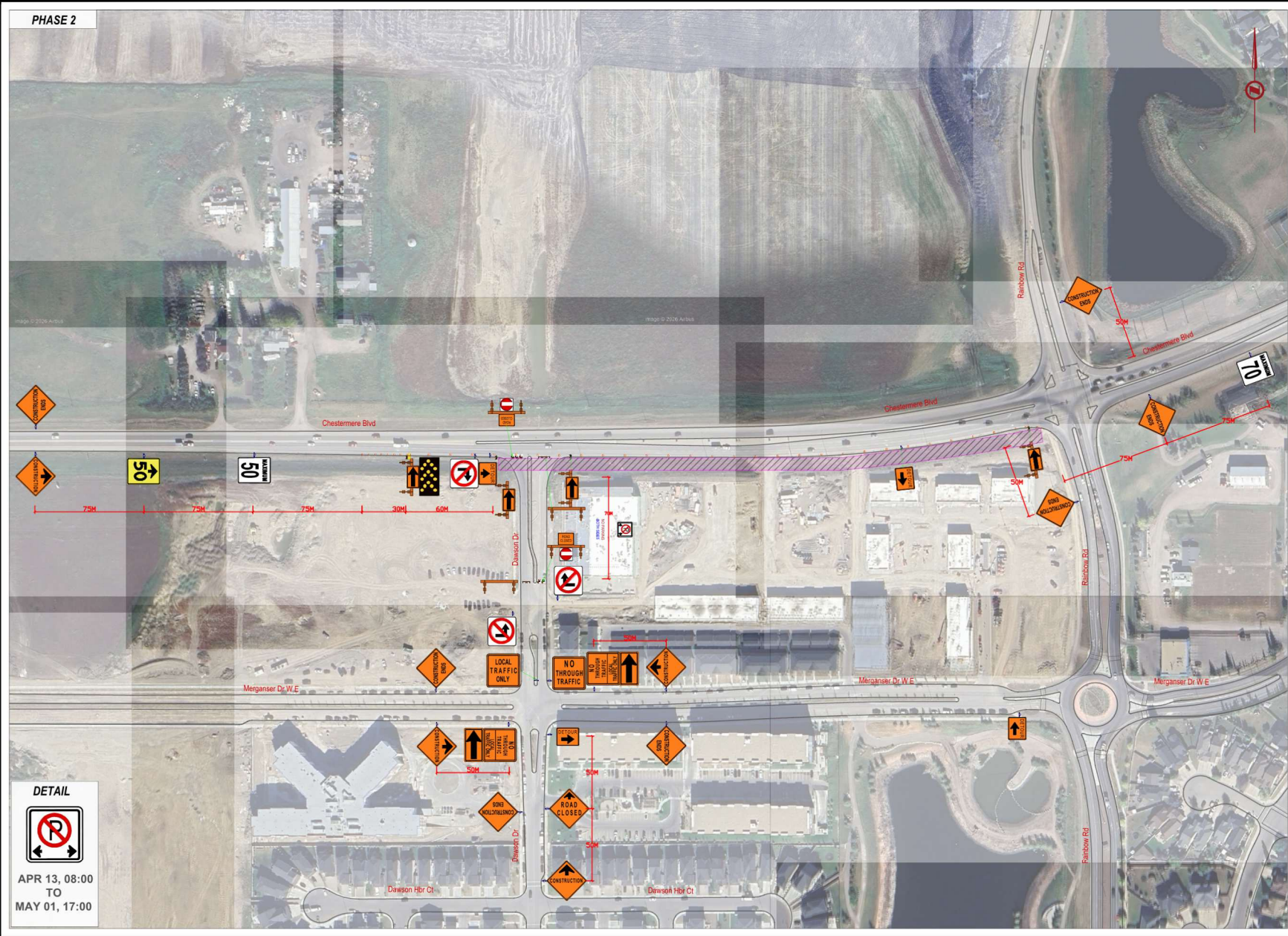
240 MERGANSER DR W,
CHESTERMERE.

SHEET 4 OF 7

SHEET SIZE: ANSI B 20 mm

FILE: C:\USER\JOSE\DESKTOP\FTS_3\LEDCOR\2026\FTS-26-2686-240 MERGANSER DR W, CHESTERMERE.DWG | DATE: Wednesday, April 1, 2026 3:53:05 PM

PHASE 2



DETAIL

APR 13, 08:00
TO
MAY 01, 17:00

FTS-26-2686

SITE CONTACT(S)

KAYLA DEWANE
(431) 373-3817

SETUP INFORMATION

SETUP: MONDAY 08:00 APR 13
PICKUP: FRIDAY 17:00 MAY 01
DAILY SET-UP.

NOTES

1. COMPANY: LEDCOR.
2. PURPOSE: HYDROVACUING, DRILLING, AND BACKFILL WORKS.
3. ONE PHASE AT A TIME.

MAX SPEED(KM/H): 50 KM/H

SPACING BETWEEN DELINEATORS(meters) 8 meters

SEAL



Fast Traffic Solutions Inc.
RM APEGA ID#: 68828
PERMIT #: P16365
The Association of Professional Engineers and Geoscientists of Alberta (APEGA)

PREPARED BY:
JOSE GALINDEZ (587) 707 1557

FastTraffic Solutions

0 60 120 m

1:3000

CLOSURE DESCRIPTION

INTERSECTION WORK ON
CHESTERMERE BLVD

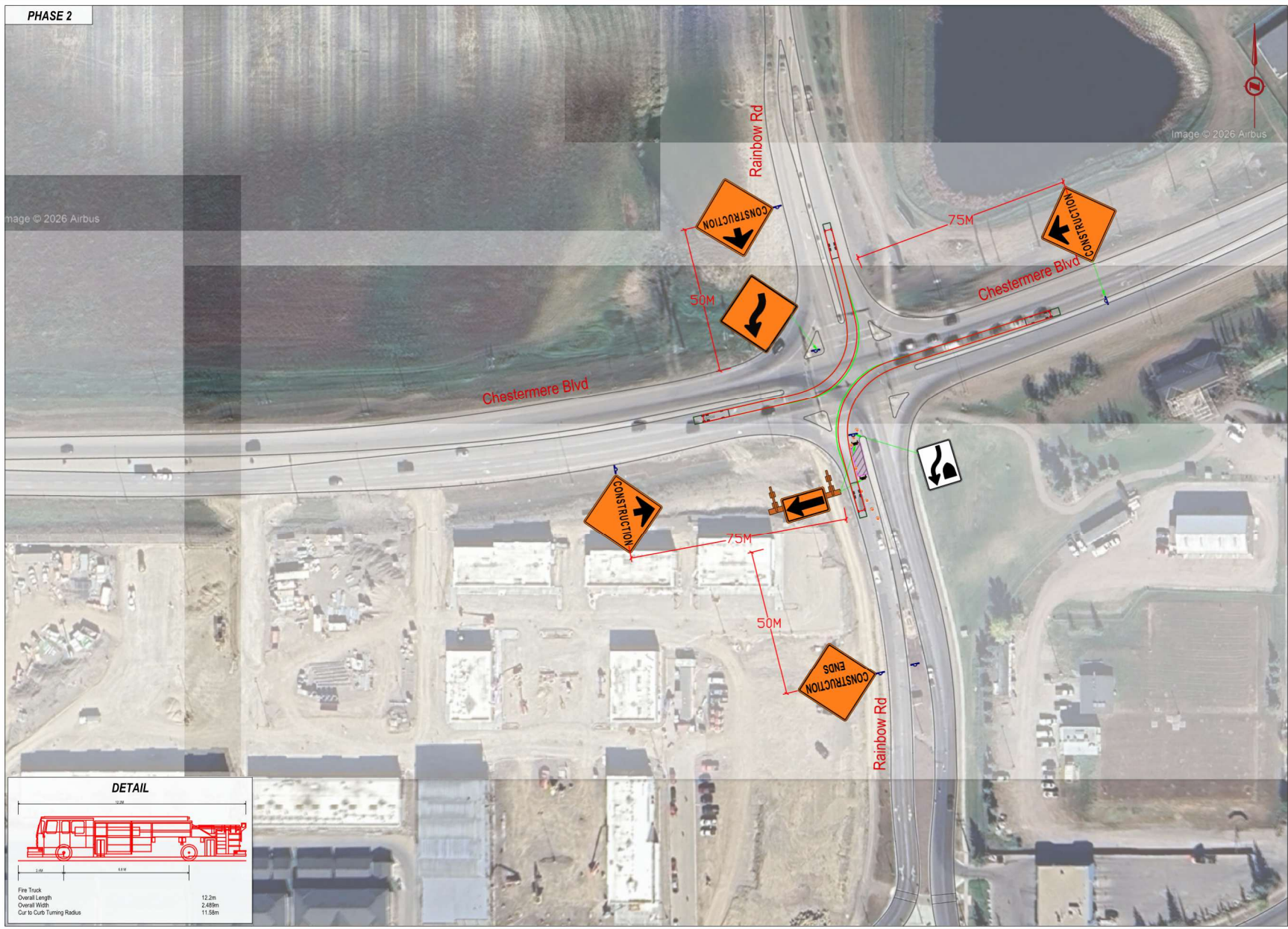
LOCATION

240 MERGANSER DR W,
CHESTERMERE.

SHEET 5 OF 7

FILE: C:\USER\JOSE\DESKTOP\FTS_31\LEDGOR\0208\FTS-26-2686-240_MERGANSER DR W, CHESTERMERE.DWG | DATE: Wednesday, April 1, 2025 3:53:05 PM

PHASE 2



FTS-26-2686

SITE CONTACT(S)

KAYLA DEWANE
(431) 373-3817

SETUP INFORMATION

SETUP: MONDAY 08:00 APR 13
 PICKUP: FRIDAY 17:00 MAY 01
 DAILY SET-UP.

NOTES

1. COMPANY: LEDCOR.
2. PURPOSE: HYDROVACUING, DRILLING, AND BACKFILL WORKS.
3. ONE PHASE AT A TIME.

MAX SPEED(KM/H): 50 KM/H

SPACING BETWEEN DELINEATORS(meters): 8 meters

SEAL



Fast Traffic Solutions Inc.
 RM APEGA ID#: 68828
 PERMIT #: P16365
 The Association of Professional Engineers and Geoscientists of Alberta (APEGA)

PREPARED BY:

JOSE GALINDEZ (587) 707 1557



CLOSURE DESCRIPTION

SB LEFT LANE CLOSED ON RAINBOW RD

LOCATION

240 MERGANSER DR W,
 CHESTERMERE.

SHEET 7 OF 7