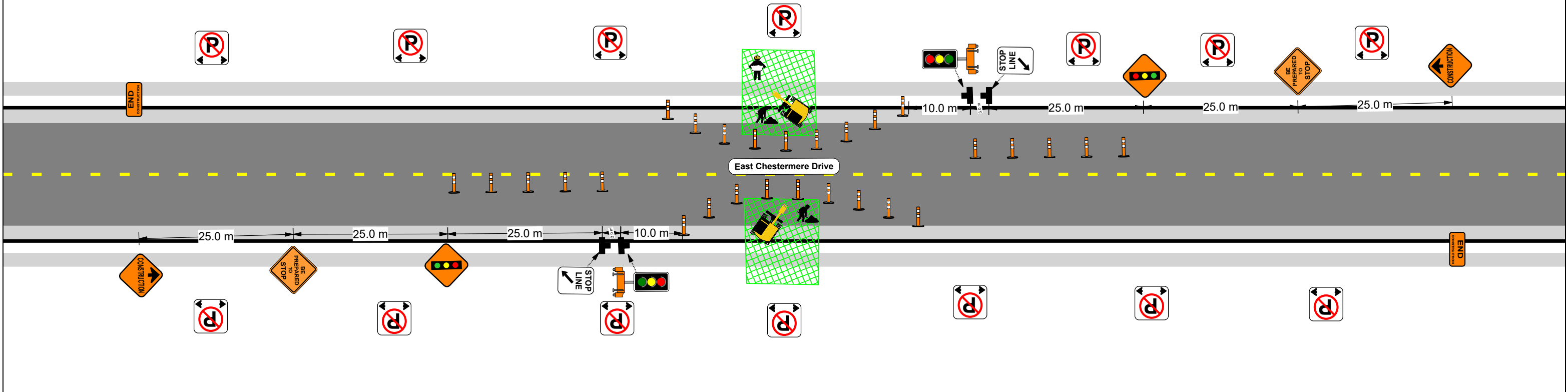


## Typical TAS Per Replacement



Manifest	
28 x Tubular	
14 x RB-51 No parking	
2 x Portable traffic signal trailer mounted	
2 x RC-4-L Stop Line - Left	
2 x TC-19-021 Be Prepared to Stop	
2 x WD-101 Construction ahead	
2 x WD-154 End construction	
2 x WD-B-4 Traffic signals ahead	

Legend	
	Foreman
	Laborer
	Portable traffic signal trailer mounted
	Tubular
	Work Area

All efforts will be made so all residents and commercial properties outside the work area will continue to have driveway access.

<p><b>PREPARED BY:</b></p>	<p><b>PROJECT:</b> 2026 Copper Lifecycle</p>	<p>PLAN No: 1 of 1</p>
	<p><b>LOCATION:</b> East Chestermere Drive, Chestermere</p>	<p>DATE: May 25, 2026</p>
	<p>Contact: Padraig (403)333-9347</p>	<p>DRAWN BY: JKC</p>

