

FILE: C:\USERS\VIDALLOA2\108\DC\AC\DC\CS\ARCADE\ACC_USACA-001\24902-CLEARWATER\PHENG\PROJECT FILES\7_PRODD0002_SURVEY_MAPPING\TAS\TAS.DWG | DATE: April 22, 2024 5:17:50 PM



SEE SHEET C-102

- NOTES**
1. ALL CONSTRUCTION TO CONFORM TO CITY OF CHESTERMERE ENGINEERING DESIGN AND CONSTRUCTION STANDARDS UNLESS OTHERWISE NOTED.
 2. LEGAL PLAN PROVIDED BY IBI GROUP. DATED JANUARY 19, 2021.
 3. TOPOGRAPHIC INFORMATION PROVIDED BY IBI GROUP (GEOMATIC), DATED FEBRUARY 13, 2020.
 4. ALL PIPE SIZES ARE IN MILLIMETRES AND ALL DIMENSIONS ARE IN METERS UNLESS OTHERWISE NOTED.
 5. ALL COORDINATES AND DISTANCES ARE BASED ON 3TM COORDINATE SYSTEM (NAD 83).
 6. ACCOMMODATION MEASURES DESIGNED IN ACCORDANCE WITH THE 2021 CALGARY TEMPORARY TRAFFIC CONTROL MANUAL AND 2018 ALBERTA TRAFFIC ACCOMMODATION IN WORK ZONES MANUAL.



227 11 Avenue SW - 3rd Floor
 Calgary AB T2R 1R9 Canada
 tel 403 270 5600
 www.arcadis.com

REVISIONS				
NO.	DESCRIPTION	DATE (YYYY-MM-DD)	BY/CHKD	RECORD
2	ISSUED FOR REVIEW	2024-10-04	JR	CF
1	ISSUED FOR PRELIMINARY REVIEW	2024-06-20	JR	CF

PERMIT	SEAL
--------	------

	BY	DATE (YYYY-MM-DD)
DESIGNED	CF	2024-06-20
DRAWN	JR	2024-06-20

SCALE 1:1500



PROJECT
CLEARWATER PHASE 1 OFFSITES
 SEC: N.W. 1/4 SEC. 14 - TWP: 24 - RGE: 28 - W 4th

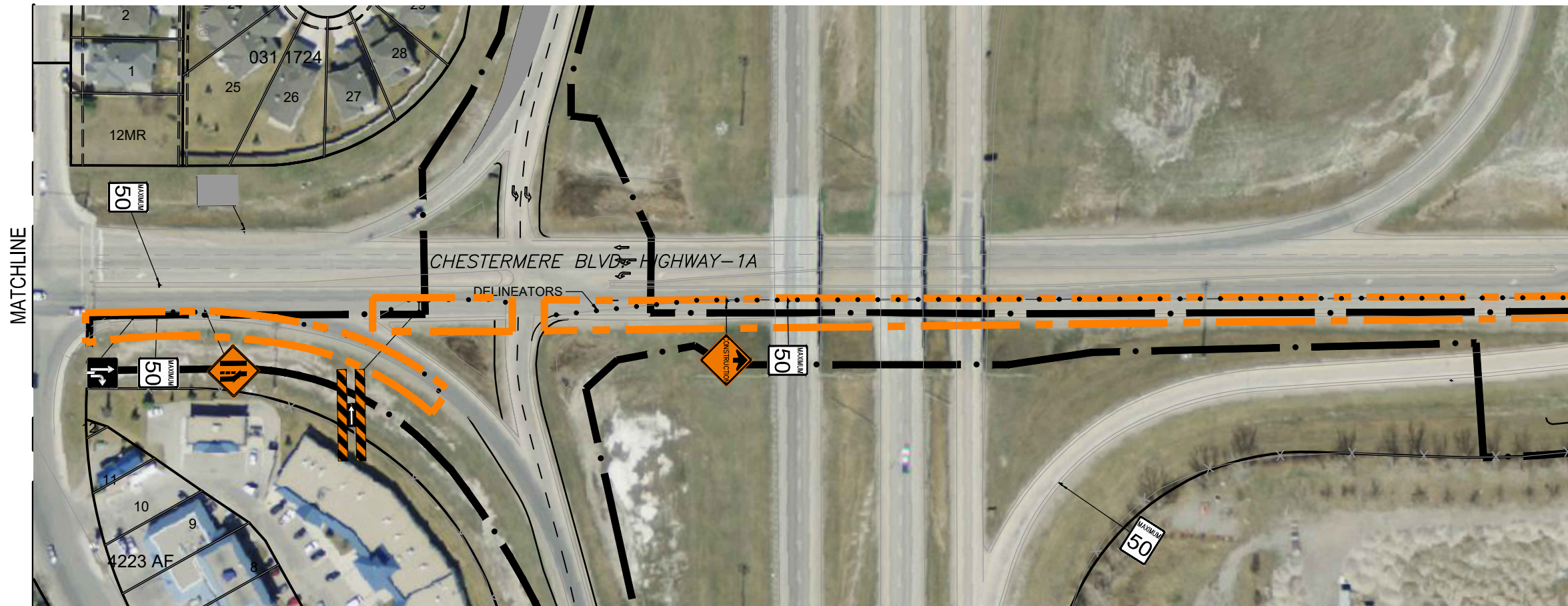
SHEET TITLE
TRAFFIC ACCOMODATION STRATEGY EASTBOUND LANE CLOSURE

FILE No. 124902-Offsite-TAS.dwg	REVISION 1	SHEET C-101
------------------------------------	---------------	-----------------------

- Manifest**
- 2 x WD - 101 Construction ahead
 - 1 x RB - 5 Maximum speed ahead
 - 1 x WD - A - 41 Road work
 - 1 x RB - 31 No passing
 - 5 x Sign Stand

- LEGEND**
- OFFSITES CONSTRUCTION BOUNDARY
 - WORKZONE BOUNDARY
 - DIRECTION OF TRAFFIC FLOW
 - DELINEATORS (8m SPACING TYP.)
 - SIGN
 - BARRIER

FILE: C:\USERS\VIDALLOA2\108\DC\AC\DC\CS\ARCADIS\ACC_US\ACA-00124902-CLEARWATER\PH1\ENG\PROJECT FILES\7_PRODD0002_SURVEY_MAPPING\TAS\124902-OFFSITE-TAS.DWG | DATE: April 22, 2024 5:18:50 PM



MATCHLINE

SEE SHEET C-103

SEE SHEET C-106

Manifest
 1 x WD - 101 Construction ahead
 1 x WD-116-1L Barricade (Left)
 4 x RB-1-50 Maximum speed
 1 x WD-A33R Merge left

LEGEND

- OFFSITES CONSTRUCTION BOUNDARY
- WORKZONE BOUNDARY
- DIRECTION OF TRAFFIC FLOW
- DELINEATORS (8m SPACING TYP.)
- SIGN
- BARRIER

- NOTES**
- ALL CONSTRUCTION TO CONFORM TO CITY OF CHESTERMERE ENGINEERING DESIGN AND CONSTRUCTION STANDARDS UNLESS OTHERWISE NOTED.
 - LEGAL PLAN PROVIDED BY IBI GROUP. DATED JANUARY 19, 2021.
 - TOPOGRAPHIC INFORMATION PROVIDED BY IBI GROUP (GEOMATIC). DATED FEBRUARY 13, 2020.
 - ALL PIPE SIZES ARE IN MILLIMETRES AND ALL DIMENSIONS ARE IN METERS UNLESS OTHERWISE NOTED.
 - ALL COORDINATES AND DISTANCES ARE BASED ON 3TM COORDINATE SYSTEM (NAD 83).
 - ACCOMMODATION MEASURES DESIGNED IN ACCORDANCE WITH THE 2021 CALGARY TEMPORARY TRAFFIC CONTROL MANUAL AND 2018 ALBERTA TRAFFIC ACCOMMODATION IN WORK ZONES MANUAL.



227 11 Avenue SW - 3rd Floor
 Calgary AB T2R 1R9 Canada
 tel 403 270 5600
www.arcadis.com

REVISIONS				
NO.	DESCRIPTION	DATE (YYYY-MM-DD)	BY/CHKD	RECORD
2	ISSUED FOR REVIEW	2024-10-04	JR	CF
1	ISSUED FOR PRELIMINARY REVIEW	2024-06-20	JR	CF

PERMIT	SEAL
--------	------

	BY	DATE (YYYY-MM-DD)
DESIGNED	CF	2024-06-20
DRAWN	JR	2024-06-20

SCALE 1:1500

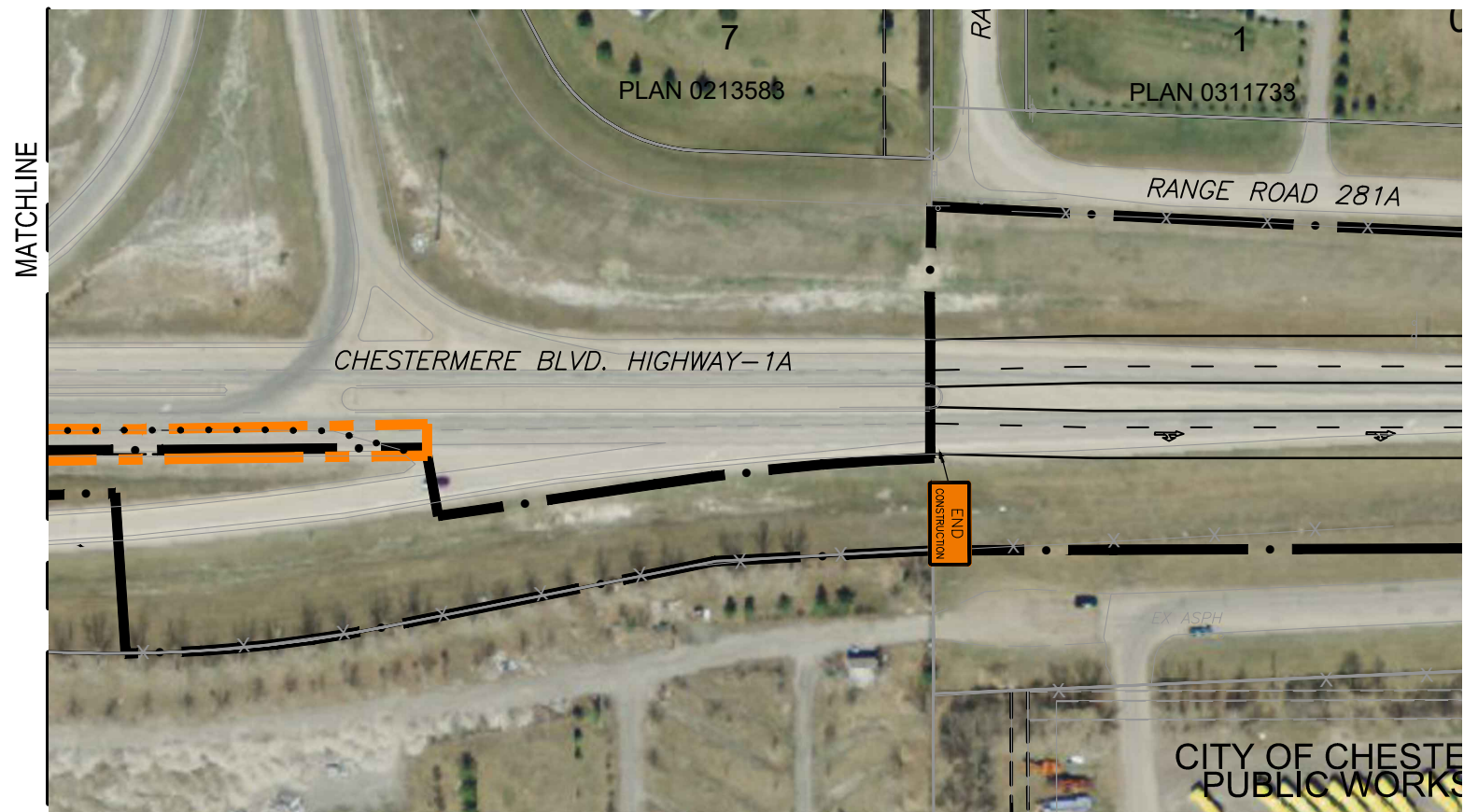


PROJECT
CLEARWATER PHASE 1 OFFSITES
 SEC: N.W. 1/4 SEC. 14 - TWP: 24 - RGE: 28 - W 4th

SHEET TITLE
TRAFFIC ACCOMODATION STRATEGY EASTBOUND LANE CLOSURE







FILE No. 124902-Offsite-TAS.dwg	REVISION 2	SHEET C-102
------------------------------------	---------------	-----------------------

FILE: C:\USERS\VIDALLOA2\108\DC\AC\DC\CS\ARCADIS\ACC_US\ACA-001\24902-CLEARWATER\PH1\ENG\PROJECT FILES\7_PRODD0002_SURVEY_MAPPING\TAS\124902-OFFSITE-TAS.DWG | DATE: April 22, 2024 5:21:15 PM



Manifest
1 x WD - 154 Construction ends

LEGEND

-  OFFSITES CONSTRUCTION BOUNDARY
-  WORKZONE BOUNDARY
-  DIRECTION OF TRAFFIC FLOW
-  DELINEATORS (8m SPACING TYP.)
-  SIGN
-  BARRIER



- NOTES**
- ALL CONSTRUCTION TO CONFORM TO CITY OF CHESTERMERE ENGINEERING DESIGN AND CONSTRUCTION STANDARDS UNLESS OTHERWISE NOTED.
 - LEGAL PLAN PROVIDED BY IBI GROUP. DATED JANUARY 19, 2021.
 - TOPOGRAPHIC INFORMATION PROVIDED BY IBI GROUP (GEOMATIC), DATED FEBRUARY 13, 2020.
 - ALL PIPE SIZES ARE IN MILLIMETRES AND ALL DIMENSIONS ARE IN METERS UNLESS OTHERWISE NOTED.
 - ALL COORDINATES AND DISTANCES ARE BASED ON 3TM COORDINATE SYSTEM (NAD 83).
 - ACCOMMODATION MEASURES DESIGNED IN ACCORDANCE WITH THE 2021 CALGARY TEMPORARY TRAFFIC CONTROL MANUAL AND 2018 ALBERTA TRAFFIC ACCOMMODATION IN WORK ZONES MANUAL.



227 11 Avenue SW - 3rd Floor
Calgary AB T2R 1R9 Canada
tel 403 270 5600
www.arcadis.com

REVISIONS				
NO.	DESCRIPTION	DATE (YYYY-MM-DD)	BY/CHKD	RECORD
2	ISSUED FOR REVIEW	2024-10-04	JR	CF
1	ISSUED FOR PRELIMINARY REVIEW	2024-06-20	JR	CF

PERMIT	SEAL
--------	------

	BY	DATE (YYYY-MM-DD)
DESIGNED	CF	2024-06-20
DRAWN	JR	2024-06-20

SCALE 1:1500



PROJECT
CLEARWATER PHASE 1 OFFSITES
SEC: N.W. 1/4 SEC. 14 - TWP: 24 - RGE: 28 - W 4th

SHEET TITLE
TRAFFIC ACCOMODATION STRATEGY EASTBOUND CROSSOVER

FILE No. 124902-Offsite-TAS.dwg	REVISION 2	SHEET C-103
------------------------------------	---------------	-----------------------

FILE: C:\USERS\VIDALLOA2\108\DC\AC\DC\CS\ARCADIS\ACC_US\ACA-001\24902-CLEARWATER\PHENG\PROJECT FILES\7_PRODD0002_SURVEY_MAPPING\TAS\124902-OFFSITE-TAS.DWG | DATE: April 22, 2024 5:22:40 PM

MATCHLINE



SEE SHEET C-105

MATCHLINE



- Manifest**
- 1 x WD - 101 Construction ahead
 - 1 x WD-A-41 Road work
 - 1 x RB - 5 Maximum speed ahead
 - 2 x RB-1-70 Maximum speed
 - 1 x RB-31 No passing
 - 5 x Sign Stand

LEGEND

- OFFSITES CONSTRUCTION BOUNDARY
- WORKZONE BOUNDARY
- DIRECTION OF TRAFFIC FLOW
- DELINEATORS (8m SPACING TYP.)
- SIGN
- BARRIER

NOTES

1. ALL CONSTRUCTION TO CONFORM TO CITY OF CHESTERMERE ENGINEERING DESIGN AND CONSTRUCTION STANDARDS UNLESS OTHERWISE NOTED.
2. LEGAL PLAN PROVIDED BY IBI GROUP. DATED JANUARY 19, 2021.
3. TOPOGRAPHIC INFORMATION PROVIDED BY IBI GROUP (GEOMATIC). DATED FEBRUARY 13, 2020.
4. ALL PIPE SIZES ARE IN MILLIMETRES AND ALL DIMENSIONS ARE IN METERS UNLESS OTHERWISE NOTED.
5. ALL COORDINATES AND DISTANCES ARE BASED ON 3TM COORDINATE SYSTEM (NAD 83).
6. ACCOMMODATION MEASURES DESIGNED IN ACCORDANCE WITH THE 2021 CALGARY TEMPORARY TRAFFIC CONTROL MANUAL AND 2018 ALBERTA TRAFFIC ACCOMMODATION IN WORK ZONES MANUAL.



227 11 Avenue SW - 3rd Floor
 Calgary AB T2R 1R9 Canada
 tel 403 270 5600
 www.arcadis.com

REVISIONS

NO.	DESCRIPTION	DATE (YYYY-MM-DD)	BY/CHKD	RECORD
2	ISSUED FOR REVIEW	2024-10-04	JR	CF
1	ISSUED FOR PRELIMINARY REVIEW	2024-06-20	JR	CF

PERMIT	SEAL

	BY	DATE (YYYY-MM-DD)
DESIGNED	CF	2024-06-20
DRAWN	JR	2024-06-20

SCALE 1:1500



PROJECT
CLEARWATER PHASE 1 OFFSITES
 SEC: N.W. 1/4 SEC. 14 - TWP: 24 - RGE: 28 - W 4th

SHEET TITLE
TRAFFIC ACCOMODATION STRATEGY EASTBOUND CROSSOVER

FILE No. 124902-Offsite-TAS.dwg	REVISION 1	SHEET C-105
------------------------------------	---------------	-----------------------

FILE: C:\USERS\VIDALLOA2\108\DC\AC\DC\CS\ARCADIS\ACC_US\ACA-001\24902-CLEARWATER\PHENG\PROJECT FILES\7_PRODD0002_SURVEY\MAPPING\TAS\124902-OFFSITE-TAS.DWG | DATE: April 22, 2024 5:24:09 PM

MATCHLINE



SEE SHEET C-105



- NOTES**
1. ALL CONSTRUCTION TO CONFORM TO CITY OF CHESTERMERE ENGINEERING DESIGN AND CONSTRUCTION STANDARDS UNLESS OTHERWISE NOTED.
 2. LEGAL PLAN PROVIDED BY IBI GROUP. DATED JANUARY 19, 2021.
 3. TOPOGRAPHIC INFORMATION PROVIDED BY IBI GROUP (GEOMATIC), DATED FEBRUARY 13, 2020.
 4. ALL PIPE SIZES ARE IN MILLIMETRES AND ALL DIMENSIONS ARE IN METERS UNLESS OTHERWISE NOTED.
 5. ALL COORDINATES AND DISTANCES ARE BASED ON 3TM COORDINATE SYSTEM (NAD 83).
 6. ACCOMMODATION MEASURES DESIGNED IN ACCORDANCE WITH THE 2021 CALGARY TEMPORARY TRAFFIC CONTROL MANUAL AND 2018 ALBERTA TRAFFIC ACCOMMODATION IN WORK ZONES MANUAL.



227 11 Avenue SW - 3rd Floor
 Calgary AB T2R 1R9 Canada
 tel 403 270 5600
 www.arcadis.com

REVISIONS

NO.	DESCRIPTION	DATE (YYYY-MM-DD)	BY/CHKD	RECORD
2	ISSUED FOR REVIEW	2024-10-04	JR	CF
1	ISSUED FOR PRELIMINARY REVIEW	2024-06-20	JR	CF

PERMIT	SEAL
--------	------

	BY	DATE (YYYY-MM-DD)
DESIGNED	CF	2024-06-20
DRAWN	JR	2024-06-20

SCALE 1:1500



PROJECT
CLEARWATER PHASE 1 OFFSITES
 SEC: N.W. 1/4 SEC. 14 - TWP: 24 - RGE: 28 - W 4th

SHEET TITLE
TRAFFIC ACCOMODATION STRATEGY EASTBOUND CROSSOVER

FILE No. 124902-Offsite-TAS.dwg	REVISION 1	SHEET C-106
------------------------------------	---------------	-----------------------

Manifest
 1 x WD-111 Be prepared to stop
 1 x RB - 5 Maximum speed ahead
 2 x Sign Stand

LEGEND

- OFFSITES CONSTRUCTION BOUNDARY
- WORKZONE BOUNDARY
- DIRECTION OF TRAFFIC FLOW
- DELINEATORS (8m SPACING TYP.)
- SIGN
- BARRIER