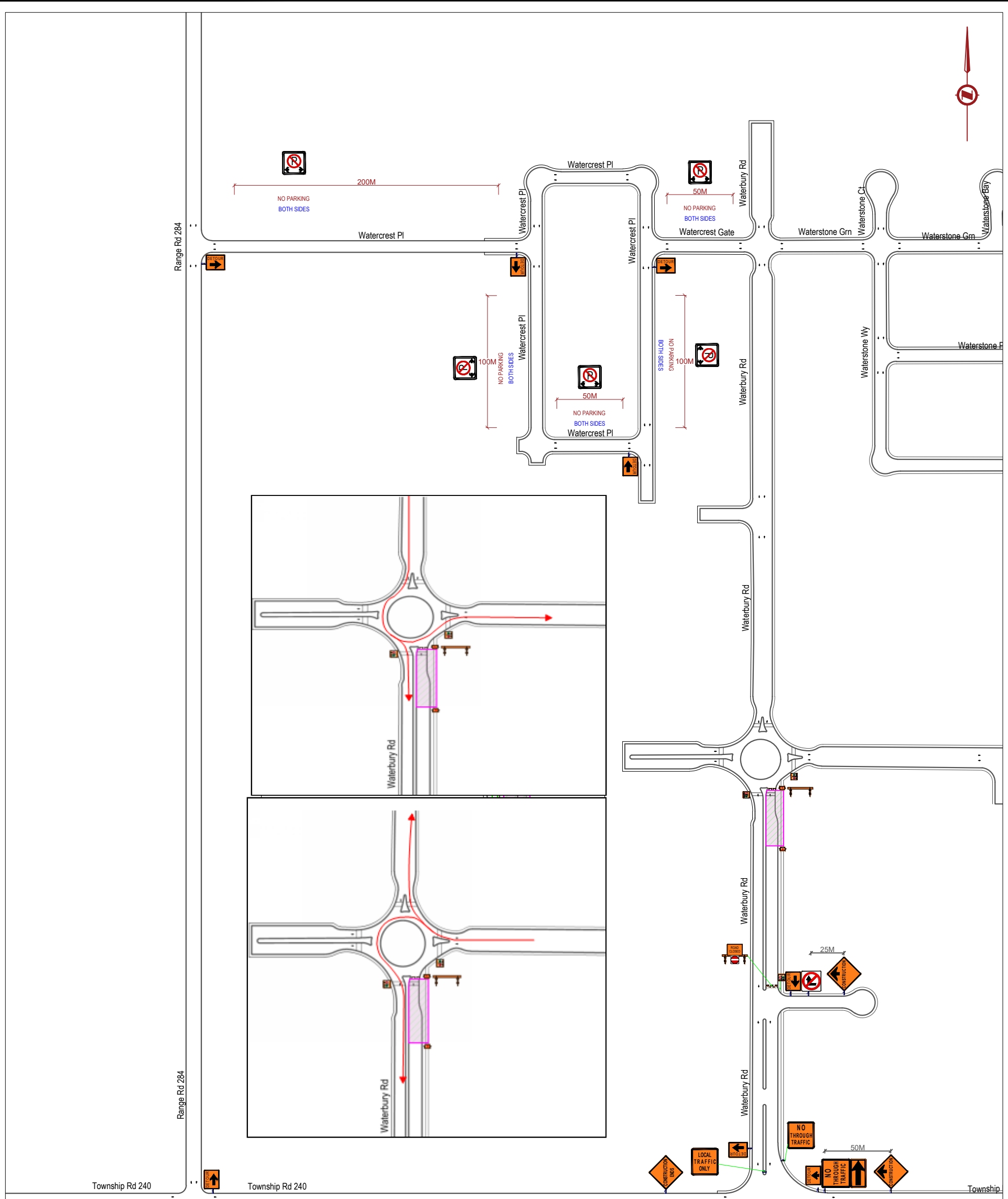


FILE: C:\USERS\JOSE\DESKTOP\FTS-26-3018-2237 WATERBURY RD - CHESTERMERE.DWG | DATE: Friday, May 22, 2026 12:26:59 PM



VMB

**WATERBURY RD
NB CLOSED
FOLLOW
DETOUR**

VMB WILL BE INSTALLED 3
BUSINESS DAYS BEFORE
THE CLOSURE

DETAIL

**JUN 08 07:00
TO
JUN 16 19:00**

ANY CONFLICTING SIGNAGE
WILL BE COVERED/REMOVED.
AUTHENTICATION AND SETUP IS
VALID FOR 90 DAYS UNLESS
CONDITIONS CHANGE.

CLOSURE DESCRIPTION NORTHBOUND RIGHT LANE CLOSED ON WATERBURY RD		SEAL	PERMIT TO PRACTICE	FastTraffic Solutions PREPARED BY: JOSE GALINDEZ (587) 707 1557
LOCATION 2237 Waterbury Rd, Chestermere.				
SETUP INFORMATION SETUP: MONDAY 07:00 JUN 8th PICKUP: FRIDAY 19:00 JUN 16th 24 HRS SET-UP. <small>*Revised Dates updated on plan by Blue-Con as per Chestermere's request</small>		NOTES 1. COMPANY: BLUE-CON EXCAVATING LTD 2. PURPOSE: UTILITY TIE-IN.		SITE CONTACT(S) CASSANDRA JONES (403) 803-0110
MAX SPEED(KM/H): 40KM/H		SPACING BETWEEN DELINEATION(meters): 6M		SHEET 1 of 1 FTS-26-3018